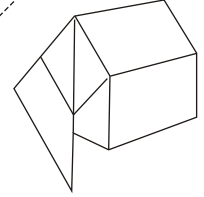
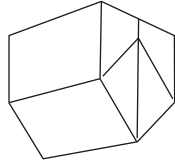


Please print onto recycled paper using recycled ink cartridges if possible.

FIG - 'Green' house - How 'green' is your house?



Then push the lowest corner of the other side of the same end wall inside. It should move back and behind the triangular flap as in the above diagram. Repeat the above by moving the flap to the opposite side. Do the same for the other end wall. This should form the house shape leaving two tabs underneath. Fold these up into the structure so it sits flat. With a needle and cotton pierce a hole in the top and thread to hang on the tree.

**Instructions**  
Cut along all solid lines. Crease along all dotted lines. Mountain or valley fold until it resembles the above diagram.

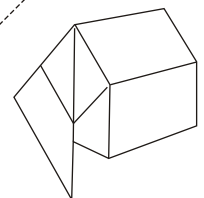
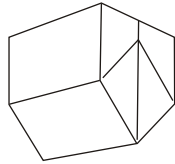
Mountain fold -----  
Valley fold -----

On the inside of the house push the triangular flap to one side so it lies flat against the end wall.



Please print onto recycled paper using recycled ink cartridges if possible.

FIG - 'Green' house - How 'green' is your house?



Then push the lowest corner of the other side of the same end wall inside. It should move back and behind the triangular flap as in the above diagram. Repeat the above by moving the flap to the opposite side. Do the same for the other end wall. This should form the house shape leaving two tabs underneath. Fold these up into the structure so it sits flat. With a needle and cotton pierce a hole in the top and thread to hang on the tree.

**Instructions**  
Cut along all solid lines. Crease along all dotted lines. Mountain or valley fold until it resembles the above diagram.

Mountain fold -----  
Valley fold -----

On the inside of the house push the triangular flap to one side so it lies flat against the end wall.



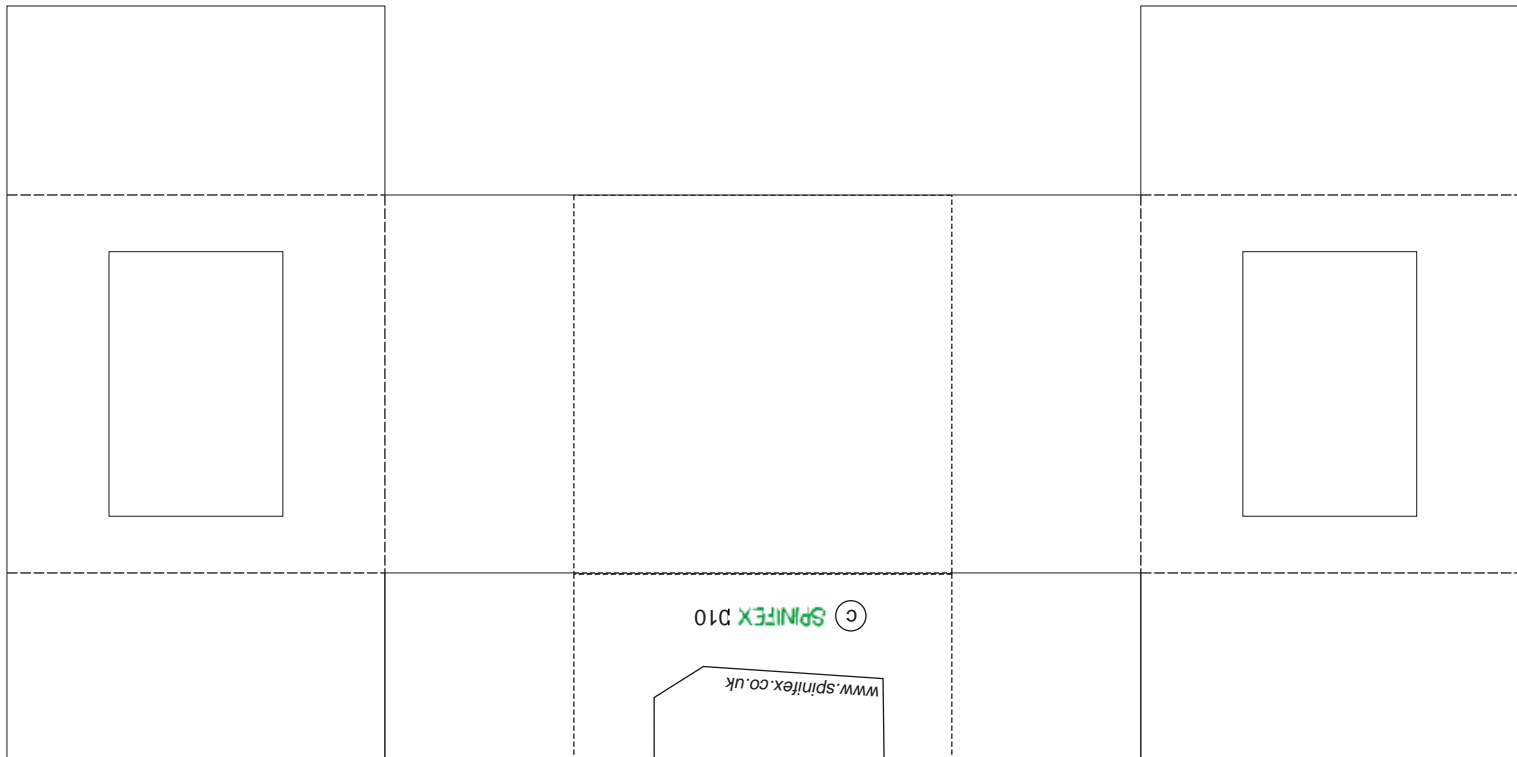


FIG - Bauble - The bauble has a window which you can decorate with your used transparent sweet wrappers.

Please print on recycled or scrap paper with ink from recycled cartridges.

Instructions

Cut along all solid lines. Crease along all dotted lines. Mountain or valley fold until it resembles the diagram below, with the printed side face down.

Mountain fold -----  
 Valley fold - - - - -

With the printed side face down fold the long tabs inwards in 5mm increments to form two flattened strips.

Fold along the remaining lines to roughly form the cube with a window in the middle. Stick your sweet wrapper between the window panels. The tabs of the window panels tuck behind the two flattened strips as the cube is formed.

Insert the curved tab between layers in the opposite edge to complete the cube. With a needle and cotton pierce a hole in the top and thread the bauble to hang on the tree or by a window. It should resemble the diagram below.

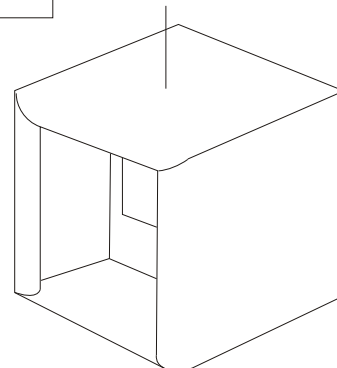
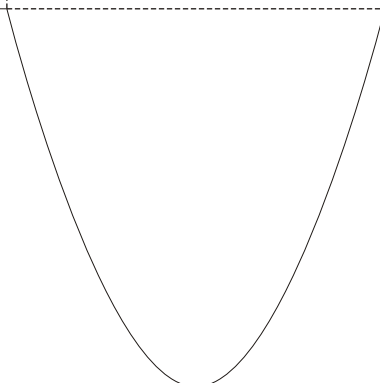
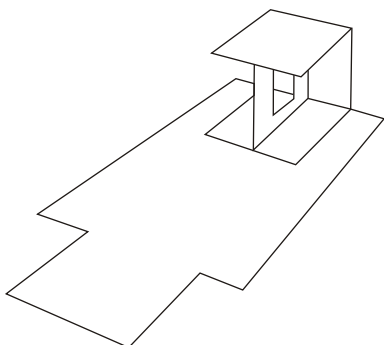
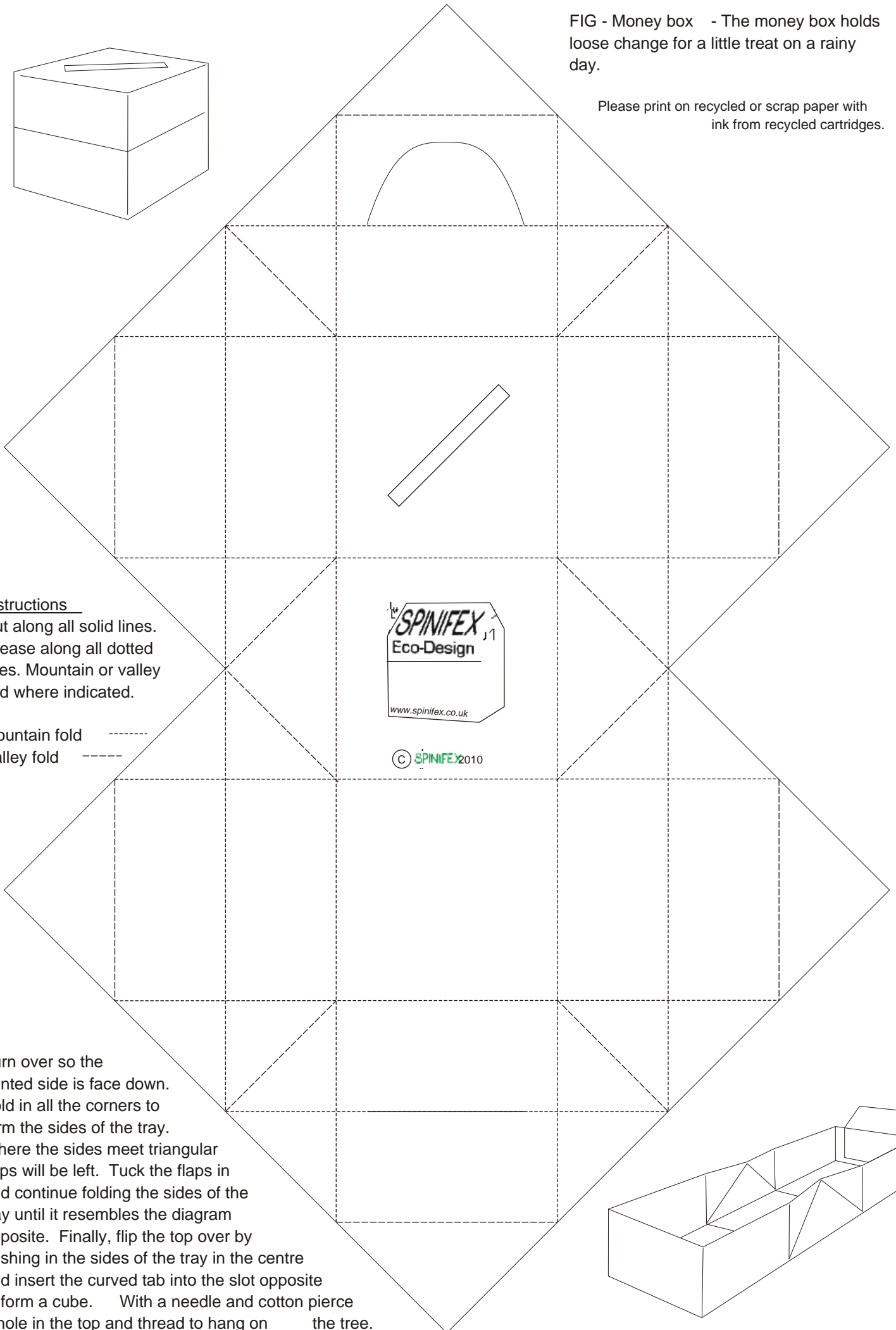
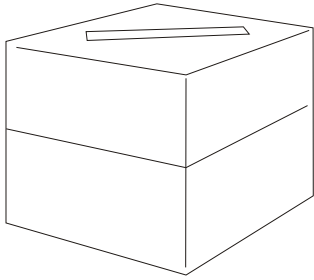




FIG - Money box - The money box holds loose change for a little treat on a rainy day.

Please print on recycled or scrap paper with ink from recycled cartridges.



**Instructions**

Cut along all solid lines.  
Crease along all dotted lines. Mountain or valley fold where indicated.

Mountain fold   
Valley fold 

Turn over so the printed side is face down.  
Fold in all the corners to form the sides of the tray.  
Where the sides meet triangular flaps will be left. Tuck the flaps in and continue folding the sides of the tray until it resembles the diagram opposite. Finally, flip the top over by pushing in the sides of the tray in the centre and insert the curved tab into the slot opposite to form a cube. With a needle and cotton pierce a hole in the top and thread to hang on the tree.

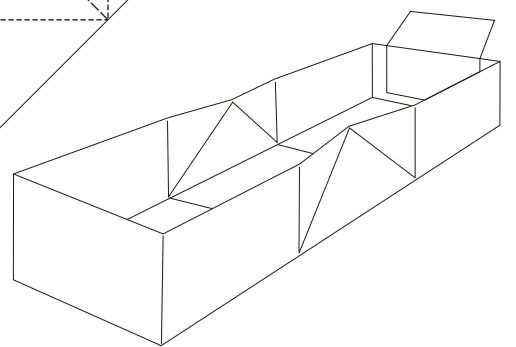
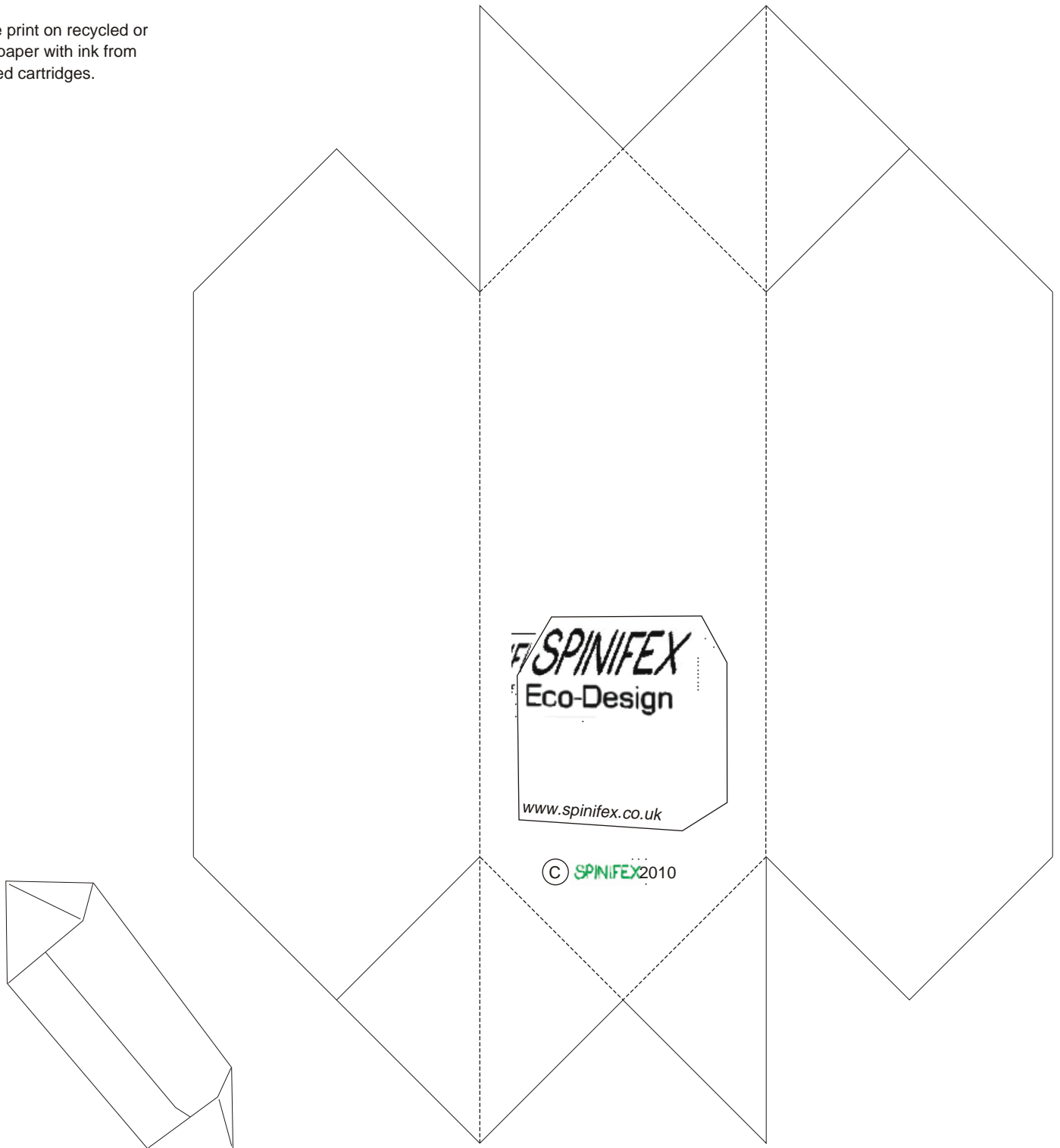


FIG - Pendant - Hang it on the ends of the tree and watch it spin.

Please print on recycled or scrap paper with ink from recycled cartridges.



Instructions

Cut along all solid lines. Crease along all dotted lines. Mountain fold where indicated.

Mountain fold -----

With the printed image facing up fold the right third behind the middle third. Now do the same with the left third. Next, fold the top left triangular tab behind. Now do the same with the top right and fold the final triangular tab up and inside the first. Repeat the procedure for the triangular tabs at the bottom. With a needle and cotton pierce a hole in the top and thread to hang on the tree.